

# Installation Manual Internal Hard Disk

## KORG TRITON



### Contents:

1. **General**
2. **Open the KORG Triton Keyboard**
3. **Installation of the Hard Disk Board**
4. **First test and formatting the Hard Disk**
5. **New installation of the KORG SCSI Board**
6. **SCSI-ID change**
7. **Assemble the KORG Triton Keyboard**

© 2000 musitronics GmbH , Version 8.4.2009

#### **ATTENTION**

A qualified service technician should do the installation of the internal Hard Disk Drive.  
We can't get responsible for damages caused by incorrect installation.

## Content of the Triton internal HD:

- Triton HD Board with SCSI to IDE converter and hard disk
- 1m flat cable with 25 pin connectors
- Plastic bag 1, mounting material for the Triton HD Board
- Plastic bag 2, mounting material for the SCSI Boards

### 1. General

The room in which the components are installed must be clean and dry. Note that there are delicate electronic components inside the TRITON, which could be destroyed by electrostatic discharge. For this reason you should avoid touching the components contacts.

The only tool required for installation is a Phillips screwdriver.

### 2. Open the KORG Triton

Switch off the instrument and disconnecting all connecting cables, especially the power cord of the keyboard.

Turn the keyboard upside down (please mind the joystick!) and unscrew the two silver metal plates that cover the SCSI and MOSS board and the Memory boards first. Now loosen all the screws on the bottom including the four ones of the floppy disk drive. Carefully remove the bottom to the front side direction.

### 3. Installation of the Hard Disk board

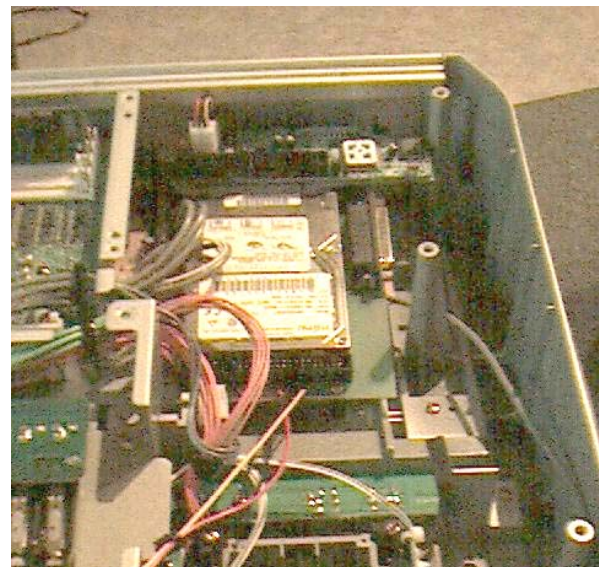
#### 3.1 Mounting the Hard Disk Board

Now you see a big free place behind the floppy disk drive, here the SCSI to IDE converter electronic and the Hard Disk will be installed.

Remove the SCSI to IDE bridge board from the board with the hard disk, so it is easier to install it.

Screw the HD Board with the 3 attached short screws on the metal angle of the KORG Triton. On the other side use two holes with the long screws and the plastic separation ring of plastic bag 1. Fasten the Hard Disk Board on the aluminium track lying underneath.

Now you can connect the SCSI to IDE bridgeboard again on the Hard Disk board. You can safe the SCSI to IDE bridge board with the added cable tie. **NOTE: If you have the Pro Version, do not use the backside of the Triton. Use the metal track under the board. The holes are marked with "PRO". It is a good idea to fix the spacers with some glue before you install it.**



### 3.2 Connection of the Power supply

It is natural that the Hard Disk needs a power supply; we use the power supply of the floppy disk that causes no problems because access to hard disk and floppy is not at the same time. Unplug of the four-pin floppy disk power cable and connect it to its mail connector of the HD-Board. Connect the four- pin (red-black-black-yellow) cable of the hard disk connector to the mail power connector of the floppy disk.

### 4. A first Test and Formatting of the Hard Disk

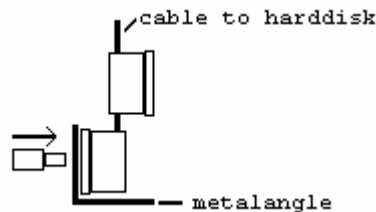
Now it is time for a first test. Put the connector of the Flat cable that comes from the Hard Disk Board to your Triton SCSI – Interface. Turn your Keyboard and switch it on. Now you should hear the Hard Disk working.

Push the disk button and then to Utility. Now you see the Hard Disk as Unit 1. If you want you can assign the Hard Disk to another ID (See: Change of the SCSI-ID)

### 5. New Installation of the KORG SCSI Board

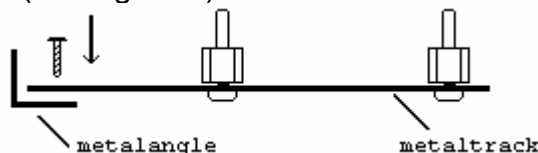
#### 5.1 New mounting of the metal angle of the SCSI-Board

Uninstall the SCSI-Board and remove the metal angle. Please install this metal angle on the 25 female connector that comes from the Hard Disk-Board (See figure 1).



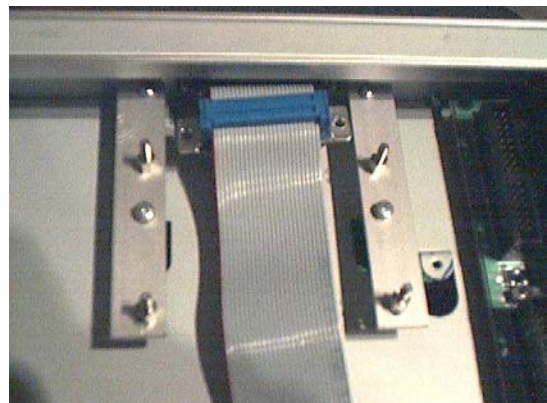
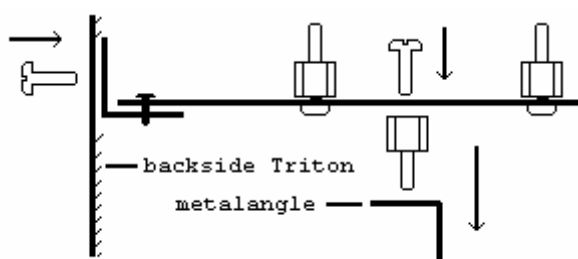
#### 5.2 Install the two metal plates

In plastic bag 2 there are two metal plates. Fasten the two metal plates with the added screws on the metal angle. (See figure 2).



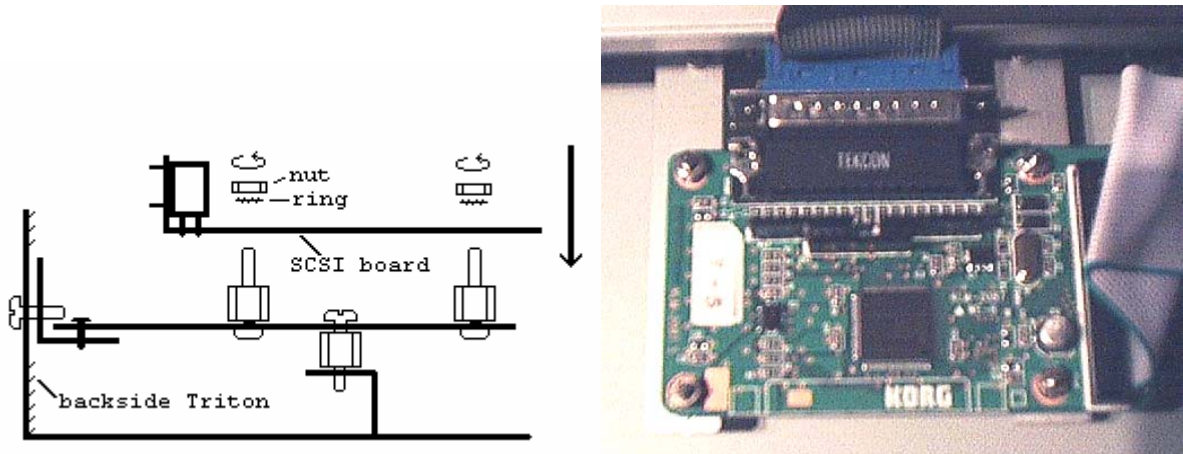
Screw the two metal distant screws in the free holes of the KORG Triton. Now mount the metal pieces

Inside your Triton. (Figure 3 and picture).



### 5.3 Mount the SCSI Board

Connect the SCSI Board with the mail connector of the flat cable and mount it into the Triton as shown below:



NOTE: If you also have the MOSS-Board installed, take care that the metal tracks do not touch the MOSS-Board. We recommend to put some isolation tape or some carton between the SCSI-Card and the MOSS Board.

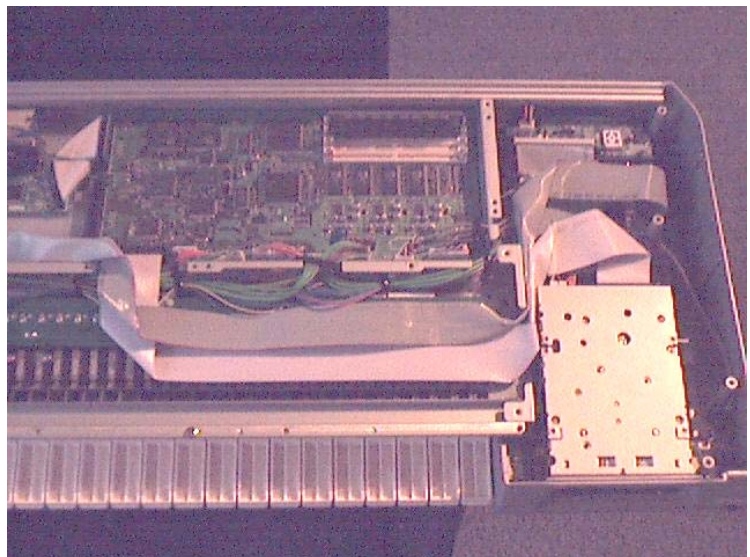
### 6. SCSI ID change

Before you reassemble the KORG Triton you should think about the SCSI ID of your Hard Disk. We have set the SCSI ID to ID1 but with the added jumpers you can change it.

The table shows the jumper position and the assigned SCSI-ID:

SCSI-ID: 4 2 1

ID 0:	:	:	:	:	= without jumper (open)
ID 1:	:	:			= with jumper (connected)
ID 2:	:		:	:	
ID 3:	:			:	
ID 4:		:	:	:	
ID 5:		:	:	:	
ID 6:		:	:	:	
ID 7:		:	:	:	



### 7. Reassemble the Triton

Before you close the Triton look that the flat cable is installed properly. The best way is that the flat cable follows the flat cable that comes from the floppy disk. You can put the two cables together with some adhesive tape.

When you mount the bottom be careful that the flat cable isn't squeezed between metal.